



Electrical data (according to IEC 60947-3)

Thermal Current I_{th} (40 °C)	125 A
Rated insulation voltage U _i (V)	690
Rated impulse withstand voltage U _{imp} (KV)	8

AC Rated operational current I_e (A)

Voltage (AC)	Category of Operation	I _e ⁽¹⁾
48 V	DC21A	125

(1) Please consult for other voltages and/or category of operations.

Connection capacity

Rigid copper conductor (mm ²)	35
Flexible copper conductor (mm ²)	16

Mechanical data

Mechanical life x10 ³	1000
----------------------------------	------

Standards

IEC 60947-3



UL60947-1 & UL60947-4-1

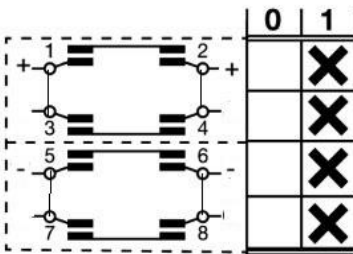


Quality Telergon, SAU

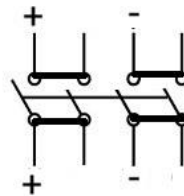
ISO 9001 & 14001



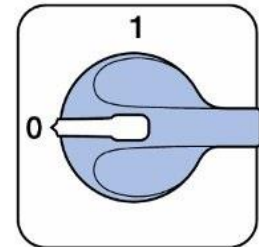
Diagram, Connection & Positions



Scheme

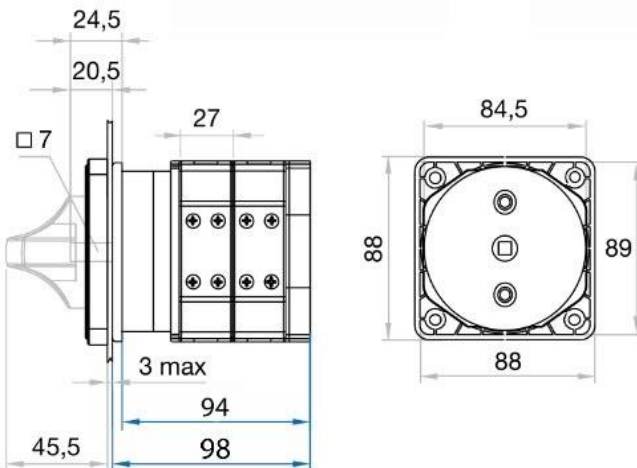


Connections

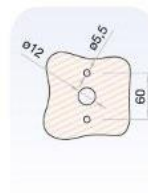


Positions

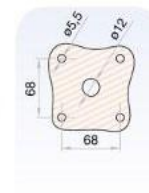
Dimensions



Frontal fixing with 2 screws



Frontal fixing with 4 screws



You will find detailed information about our products on our web site www.telergon.es



Cam Switch
T-0012500013E1N1

TELERGON, SAU
Data subject to change without notice (printed: 21/04/2026)